



Unique Garden Centre

FOUNDATION PLANTINGS


The **Do's** and **Don't** rules for foundation planting.



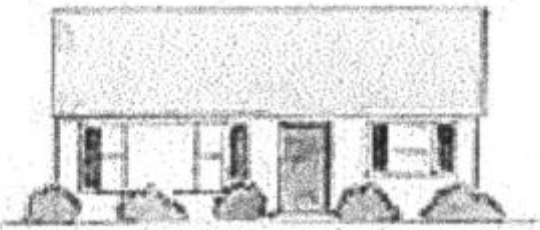
Do blend the corners of the home with surroundings with round spreading trees and shrubs. This takes away the harshness of the straight lines of the building.



Don't plant upright or columnar trees and shrubs at corners and doorways without some rounded shrubs as well. In this example, the visual concept is still straight up lines with straight across lines instead of softening the edges.



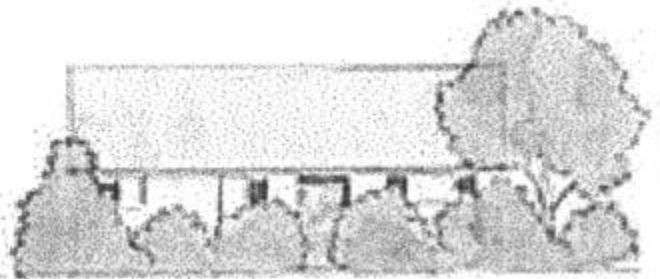
Do try to create informal balance with the plants with visual weight as opposed to a formal (even numbers) balance. Put the largest (heaviest) plantings on the light (short) side. To help keep things in proper perspective, draw a line from the middle of the doorway to 2/3 of the way up on the corner of the house. Plantings in front when mature should be below this line.



Don't segment the house by planting the same shrub every few feet. This causes disjointed eye flow and does not soften or blend the house with the surroundings. It also tends to hide the house, instead of emphasizing its good points. Remember, you want to anchor the house to its surroundings while enhancing its style.



Do plant trees and shrubs that at maturity are no taller than the line in the previous example. Before buying, check the plant tags or ask our garden centre staff. As a rule, plants should be no taller than the bottom of your windows. Nor should they spread so wide they block access to the door or sidewalk.



Don't ring your home with plants that grow too large when they mature. Your house will disappear behind the mass of foliage. Not only will it be difficult for visitors to find your home, but house maintenance will become an odious chore.



Do allow room for the plants to spread. Measure out from the house half the maximum mature spread of the plants. Then add another foot to the measurement. This gives you enough room to pull the plants back without hurting them in order to set up a ladder and work comfortably. The plants will have enough space to develop to their full potential.



Don't plant right next to the house. You will only make it difficult to turn on the water, paint or repair the house, read the meter, hang up Christmas decoration etc. Dense plantings can hold in moisture so siding rots. Close planting also provides a home for spiders and other insects that then find it easy to get inside the house.